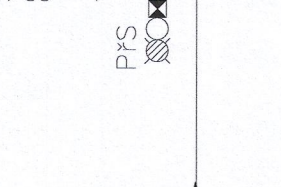
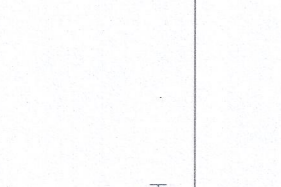
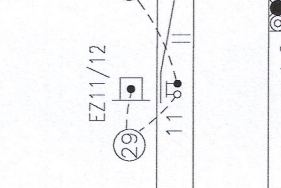
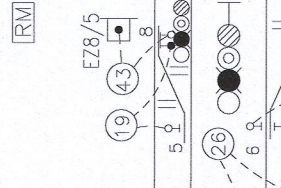
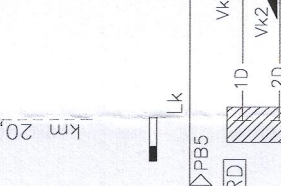
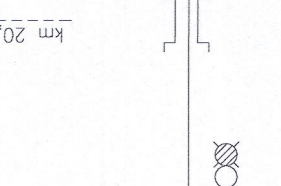
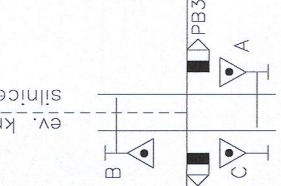


Klenti pod Čerchovem  
Tratová rychlost: 60 km/hod.  
Zábrzdňá vzdálenost: 400 m

P705  
PZS 37BI  
celé závory

slinice III/19520  
ev. km 20,090



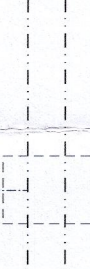
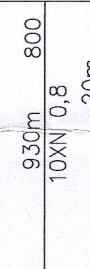
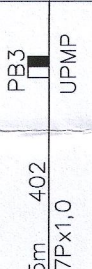
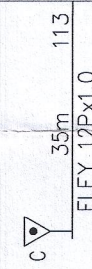
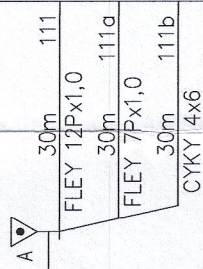
Hostouň  
Tratová rychlost: 60 km/hod.  
Zábrzdňá vzdálenost: 400 m

Žst. POBĚŽOVICE  
SZZ 2.kategorie

Horšovský Týn  
Tratová rychlost: 60 km/hod.  
Zábrzdňá vzdálenost: 400 m

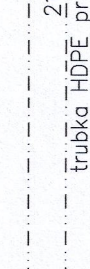
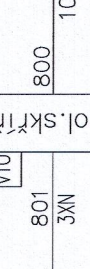
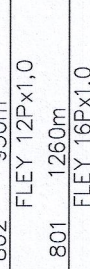
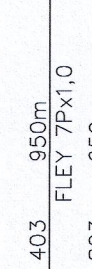
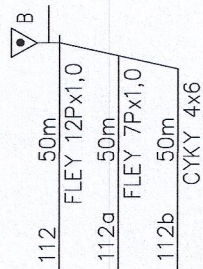
Před RD bude umístěna kabelová komora, do které budou zavedeny všechny kladené HDPE, včetně přípojně do RD. Všechny trubky (vyjma přípojně) v KK budou bez přerušení a bez spojky. KK bude opatřena bar. markerem oranžovým, stejně jako konce HDPE. TK bude vyveden do skříně vně RD.

km 20,105



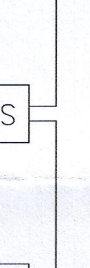
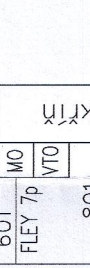
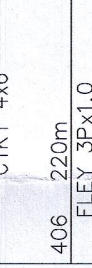
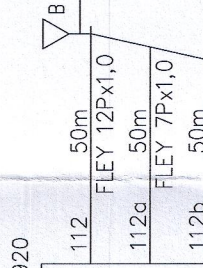
kabelová komora

km 20,090



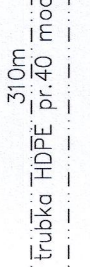
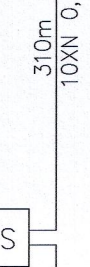
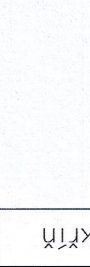
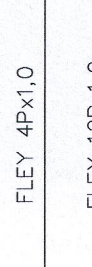
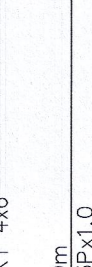
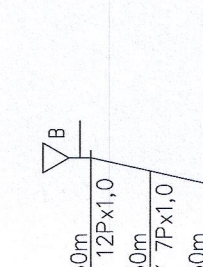
kabelová komora

km 20,920



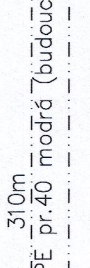
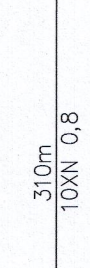
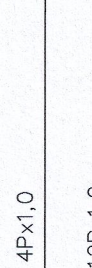
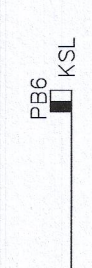
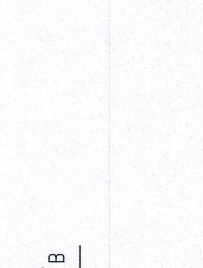
kabelová komora

km 21,200



kabelová komora

km 21,353



kabelová komora